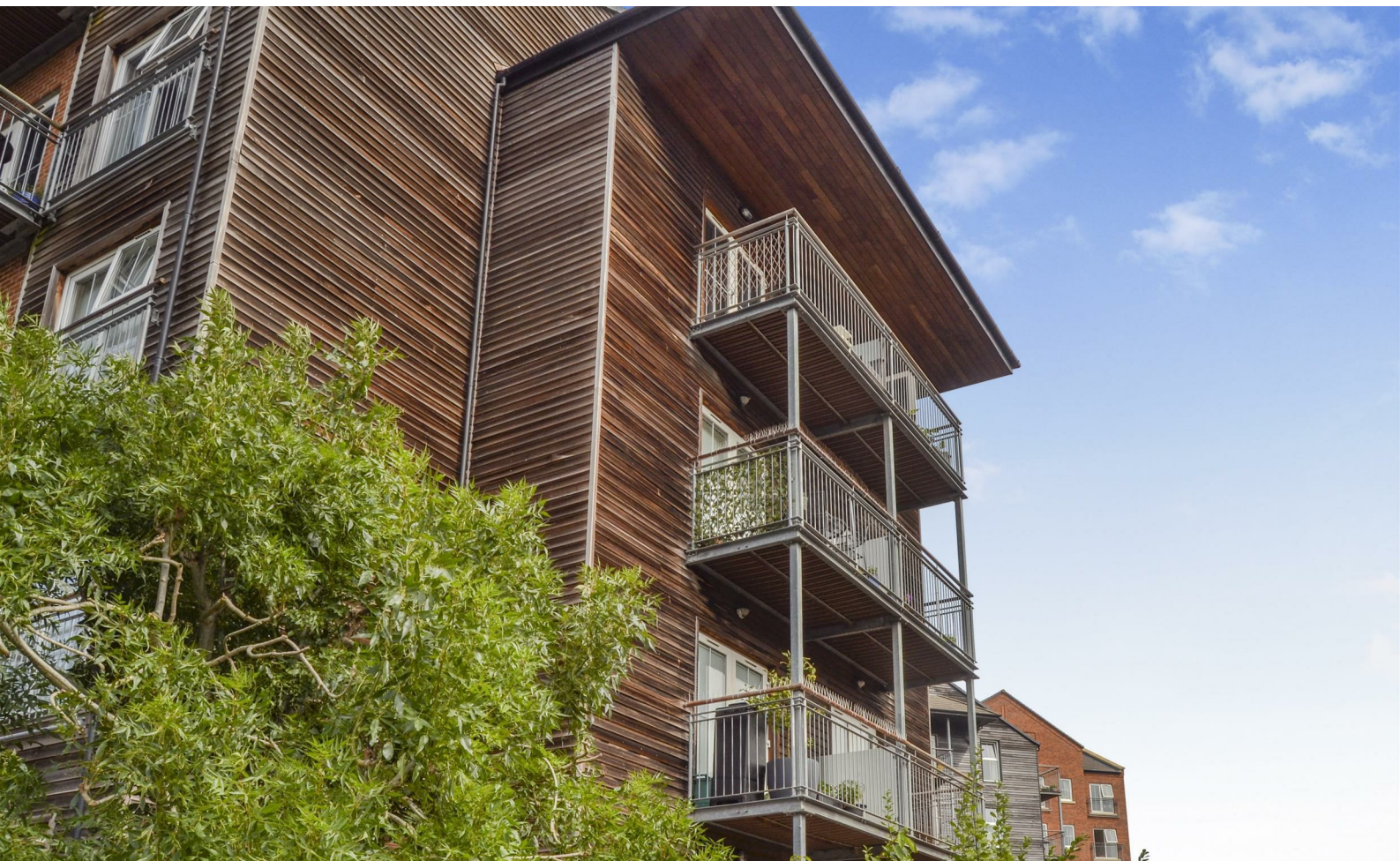




Naylors

ESTATE AGENTS CHARTERED SURVEYORS



14 Soar House St. Marys Road

, Market Harborough, LE16 7GR

£900

An opportunity to Let a two bedroom first floor apartment in this ideal location of Market Harborough. The property is situated within close proximity to the mainline train station and within walking distance to shops and the town.

The accommodation in brief comprises open plan living with fully fitted kitchen, living area opening onto balcony, two double bedroom, bathroom, allocated car parking and communal gardens.

Available middle of September

Viewing

Please contact our Market Harborough Office on 01858 450020 if you wish to arrange a viewing appointment for this property or require further information.



2



1



0



C

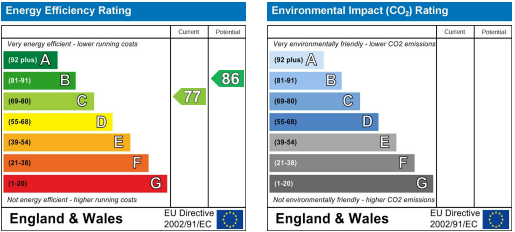
Floor Plan



Area Map



Energy Efficiency Graph



These particulars, whilst believed to be accurate are set out as a general outline only for guidance and do not constitute any part of an offer or contract. Intending purchasers should not rely on them as statements of representation of fact, but must satisfy themselves by inspection or otherwise as to their accuracy. No person in this firm's employment has the authority to make or give any representation or warranty in respect of the property.